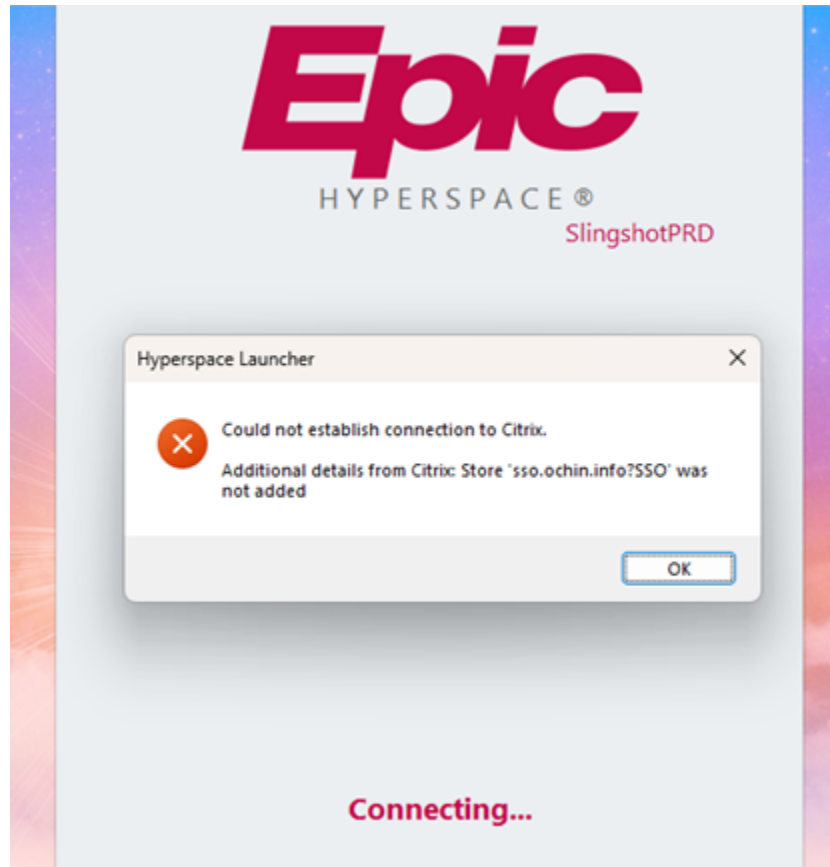


**Error:** 'sso.ochine.info?SSO was not added.



A computer's ID must be approved and registered with the EPIC system for a user to connect to EPIC.

**Error is due to:**

- New Computer: You must submit an EPIC ticket requesting approval for any new computer. Only applies to MNHC computers.
- If a computer previously accessed EPIC but now receives an error, the computer ID may have been deactivated due to inactivity.
- **The current computer was previously EPIC-approved but not approved for Imprivata SSO.** Someone must have installed Imprivata software for the first time without obtaining EPIC approval first.